

A blue-tinted photograph of a military helicopter on a field. Several soldiers in full combat gear are running towards the helicopter. The helicopter has a white cross on its side, indicating it is a medical evacuation (medevac) helicopter. The scene is set in a grassy field with trees in the background.

TSNRP

Fostering Excellence in Military Nursing

TriService Nursing Research Program 2022

USU



Uniformed
Services
University

The work is supported by funding from the TriService Nursing Research Program, USU Award HU00012120101. This project was sponsored by the TriService Nursing Research Program, Uniformed Services University of the Health Sciences; however, the information or content and conclusions do not necessarily represent the official position or policy of, nor should any official endorsement be inferred by, the TriService Nursing Research Program, the Uniformed Services University of the Health Sciences, the Department of Defense, or the U.S. Government



Evidence-Based Practice (EBP)

A quick introduction to EBP
Sponsored by the TriService Nursing Research Program

TSNRP
Fostering Excellence in Military Nursing

Evidence-Based Practice is present in all sectors within military nursing and healthcare



- Direct patient care within inpatient and outpatient areas
- Healthcare leadership and organizational change
- Operational and deployment care of the warrior

Evidence-Based Models (47+ in Literature), a few selected examples listed here



University of Iowa Health Care

*Department of Nursing Services
and Patient Care*



**Helene Fuld Health Trust National Institute for
Evidence-based Practice in Nursing and Healthcare**



**Johns Hopkins Nursing
Center for Evidence-Based Practice**

TSNRP
Fostering Excellence in Military Nursing

EBP Models Vary Slightly with Similar Processes



URL: <https://libraryguides.mcgill.ca/nursing>

Sources of Evidence

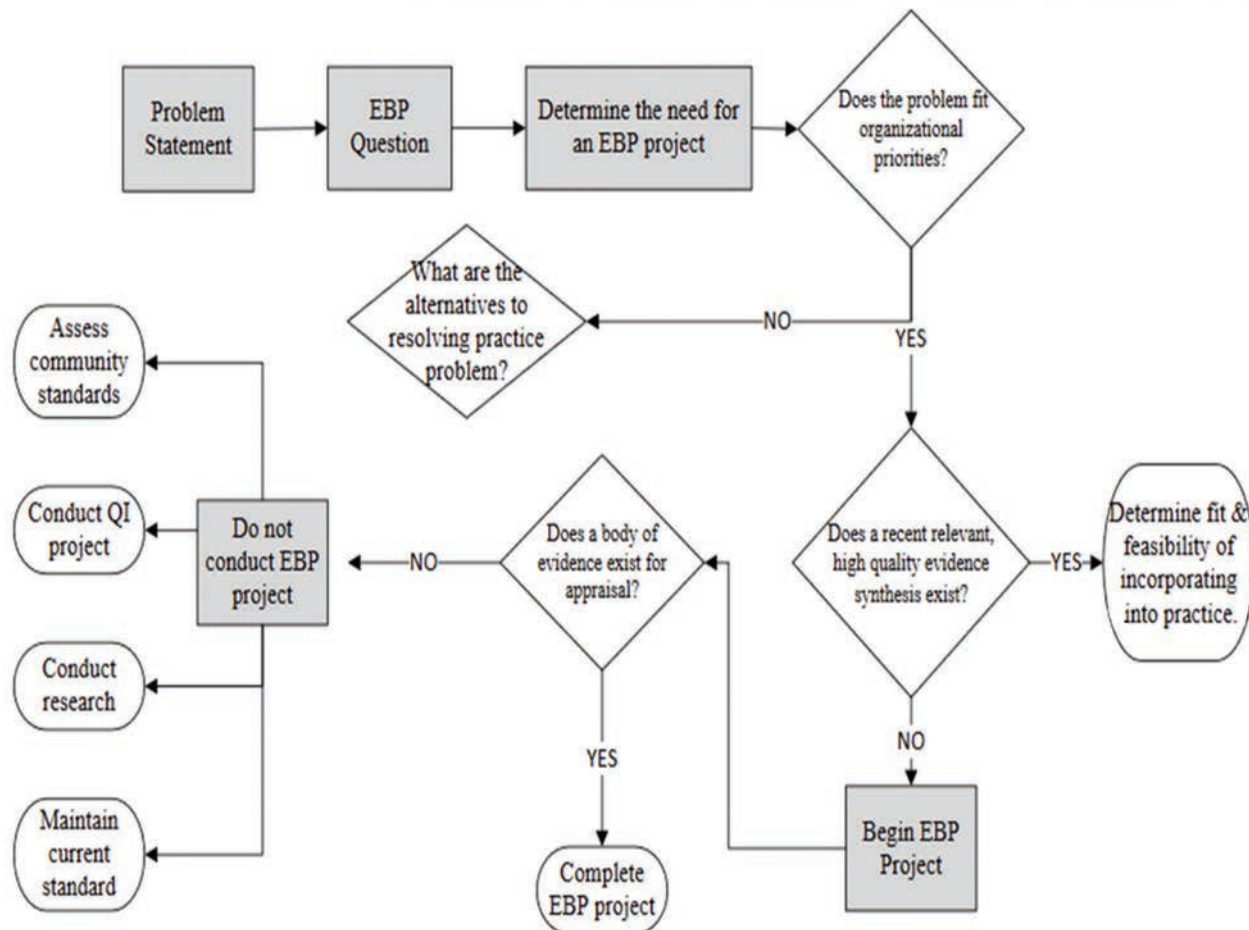


Ascension Wisconsin EBP Tools Table

Choosing a Pathway for Your Clinical Journey

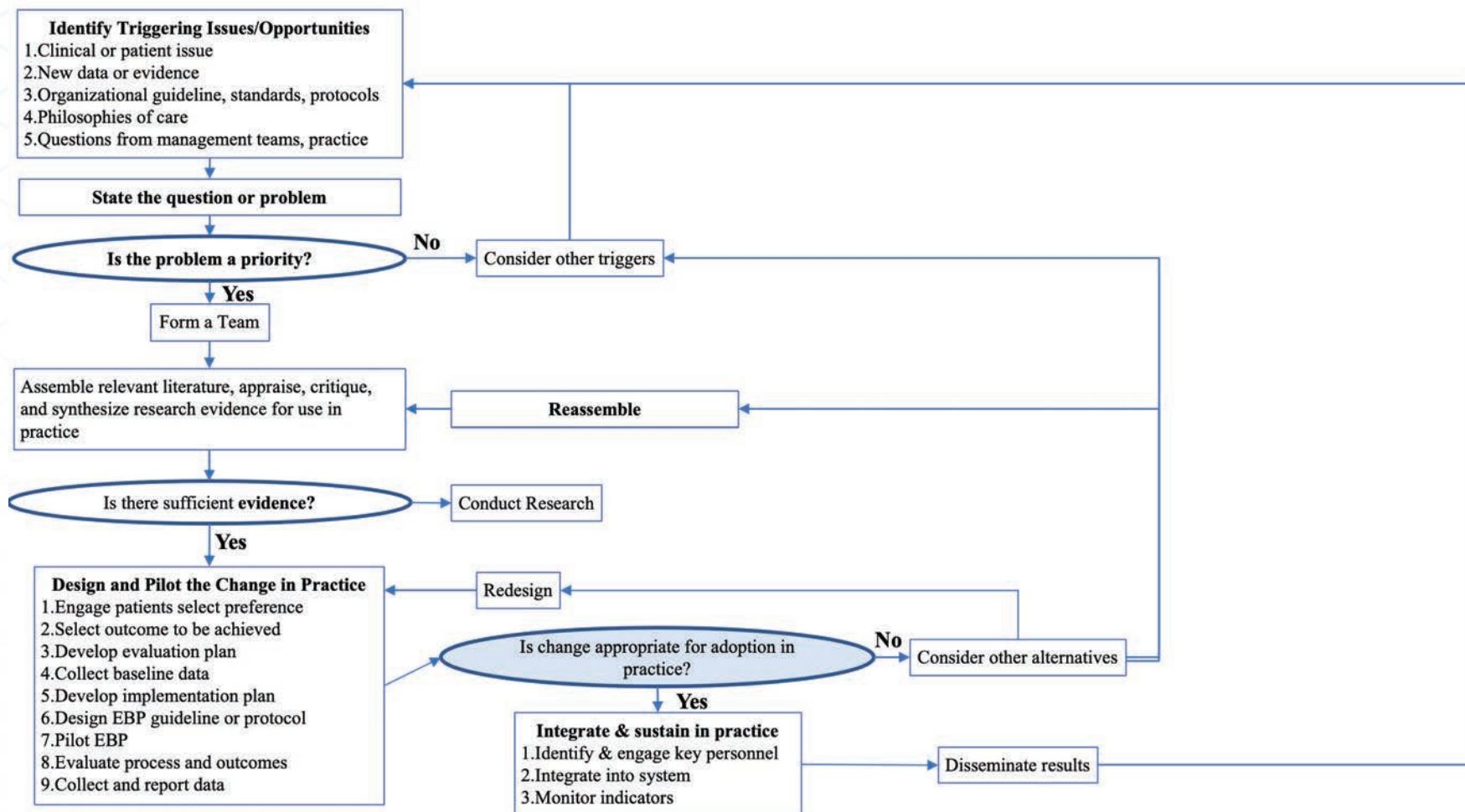


Practice Question, Evidence Evaluation Translation into Practice (PET)

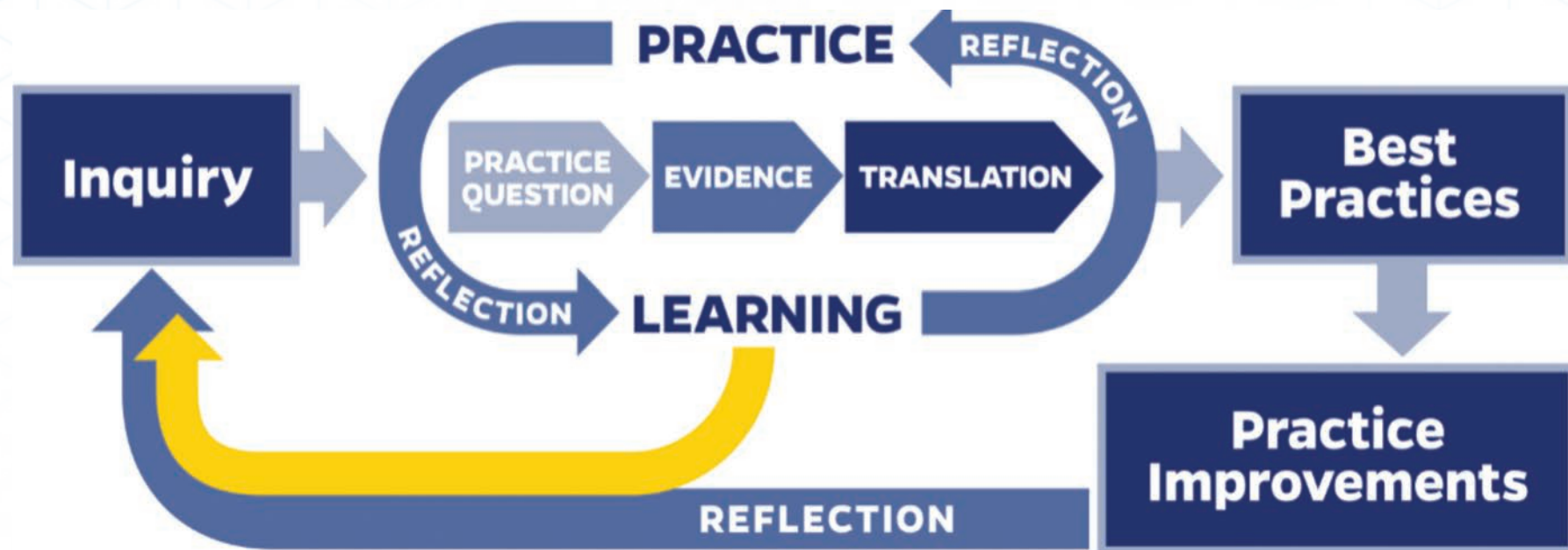


Hopkins decision tree for Clinical Inquiry (ver. 2022)

IOWA EBP Decision Tree (ver. 2017)



Hopkins Interprofessional Team Model



Evidence-Based Practice Centers and Models



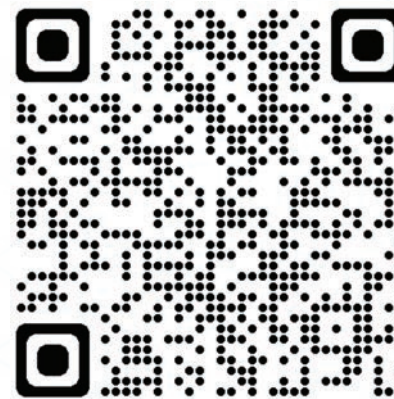
Joanna Briggs Center for Evidence Based Healthcare



Johns Hopkins Center for Nursing and EBP



University of Iowa Nursing and EBP



Fuld Institute at Ohio State Center for Nursing

TSNRP EBP Resources

Project Consultations, Planning, Guidance

EBP Project Guides

On Site EBP Courses

Virtual EBP Courses



TSNRP Funding for EBP Projects

Mini EBP awards up to \$10,000

TSNRP EBP Awards \$250,000

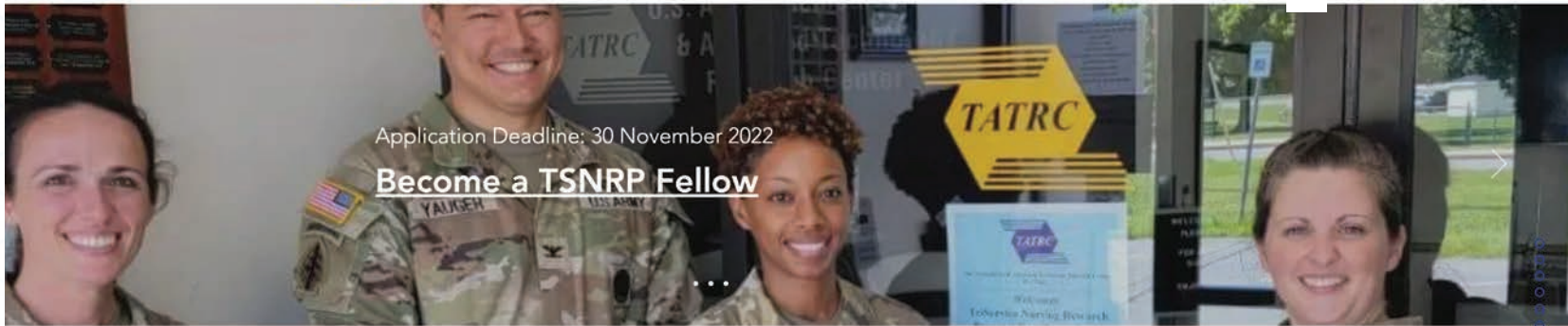
View TSNRP Award Application Information at
www.tsnrpgrants.com/ords/



EBP Facilitator Consultations



[Research Interest Groups](#) [Resources](#) [Funded Research/EBP](#) [Events](#) [Blog](#) [About](#)



Funding Military Nursing Research

Since 1991, TSNRP has funded 529 military nursing research grants with 38 active research projects and an annual funding of \$6M to advance Evidence-Based Practice (EBP). The TSNRP Resource Center provides valuable training for military nurses, while its Research Interest Groups foster collaboration, mentorship, and education for military nurses, scholars, and graduate nursing students.



triservicenurse.org

TSNRP
Fostering Excellence in Military Nursing

TSNRP Mini EBP Award Checklist

- Clinical Inquiry Topic Arises-Write clinical issue problem down
- Consult with local point of contact(s) and mentor(s)
- Contact TSNRP grant team to advise of intent to apply for the Mini EBP award (MEB)
- Consult with assigned EBP Facilitator (EBPF) referred by grant management team
- Download appropriate forms and guide from the TSNRP grants portal via www.tsnrpgrants.com/ords/
- Assemble the team/stakeholders and role in project (potential members as well)
- Draft PICO(T) question(s) for review
- Consult medical librarian, site experts, and EBPF to review current best practices
- Draft timeline for project milestones (Gantt chart or similar)
- Obtain letters of support and specifics on any assistance that will be provided for the project. (Unit, Director, IT, Space Utilization, Engineering, etc.)
- Budget (line item for final with S/H/tax)
- Evidence appraisal and synthesis tables
- Outcomes and measurement tools to be used
- Project Summary (TSNRP and/or DHA focus areas, military nursing relevance, sustainment plan)
- eIRB submission (*DHA current guidance states EBP must go through eIRB for review*).
- Point of Contact(s) email and phone number for project related questions from TSNRP
- Verify Point of Contact(s) mailing address and phone number for equipment delivery
- Final review with mentor(s) and EBPF before submission
- Application submission and email confirmation receipt
- Timely follow up with any requested stipulation items or questions
- Send confirmation email upon receipt of award equipment, and track condition and location for inventory reporting
- Completion of Interim and Final Reports

References

Melnyk, BM; Fineout-Overholt, E; Stillwell, SB; Williamson, KM. Evidence-Based Practice: Step by Step: The Seven Steps of Evidence-Based Practice, AJN The American Journal of Nursing: January 2010 - Volume 110 - Issue 1 - p 51-53 doi: 10.1097/01.NAJ.000036.

Ascension Health. "Evidence-Based Practice: EBP Tools Table." Ascension EBP Tools, 2022, <https://ascension-wi.libguides.com/ebp/ToolsTable>. Accessed 06 October 2022.

Johns Hopkins Medicine Center for Evidence Based Practice. "2022 EBP Models and Tools." Johns Hopkins Medicine Center for Evidence-Based Practice Model, Sigma Theta Tau International, 2022, https://www.hopkinsmedicine.org/evidence-based-practice/ijhn_2017_ebp.html. Accessed 6 October 2022.

McGill University. "Home - Nursing - Guides at McGill Library." McGill Library Guides, 7 October 2022, <https://libraryguides.mcgill.ca/nursing>. Accessed 26 October 2022.

The Ohio State University College of Nursing Helen Fuld Trust National Institute for Evidence-Based Practice in Nursing and Healthcare. "Evidence Based Offerings." Helene Fuld Health Trust National Institute for Evidence-based Practice in Nursing and Healthcare: Fuld National Institute for EBP, 2022, <https://fuld.nursing.osu.edu/>. Accessed 26 October 2022.

Sigma Theta Tau International Nursing Honor Society. "Sigma Theta Tau International Nursing Honor Society." Sigma Resources, 2022, <https://www.sigmamarketplace.org/johns-hopkins-evidence-based-practice-for-nurses-and-healthcare-professionals-fourth-edition>. Accessed 26 October 2022.

University of Iowa Hospitals and Clinics. "The Iowa Model Revised: Evidence-Based Practice to Promote Excellence in Health Care." University of Iowa Hospitals & Clinics, 2017, <https://uihc.org/iowa-model-revised-evidence-based-practice-promote-excellence-health-care>. Accessed 26 October 2022.

Sigma Theta Tau International Honor Society of Nursing. "JHNEBP Instructor's Guide." Johns Hopkins Evidence-Based Practice for Nurses and Healthcare Professionals Model and Guidelines, 4th ed., McGraw Hill, 2022, p. 42. Sigma Theta Tau, <https://www.sigmamarketplace.org/johns-hopkins-evidence-based-practice-for-nurses-and-healthcare-professionals-fourth-edition>. Accessed 2022.